



Red Hat
Summit

Connect





Red Hat
Summit

Connect

AI+, una AI generativa affidabile e sicura grazie ad IBM Cloud

Raoul Alfredo Rocher

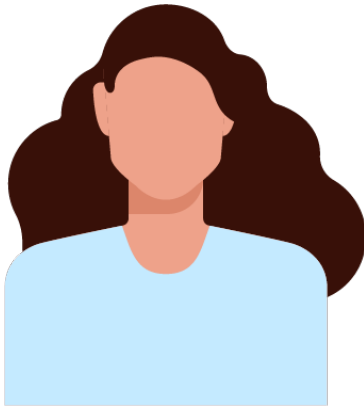
Data & AI Technical Specialist
IBM Italia

Massimo Caprinali

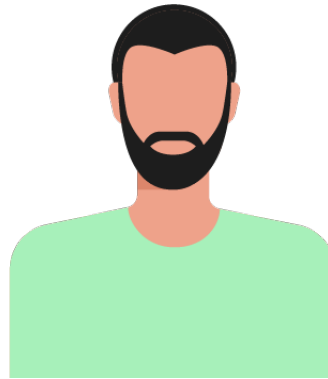
Public Cloud Technical Specialist
IBM Italia



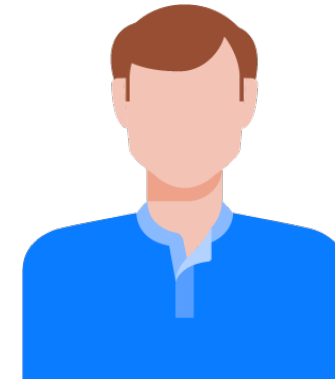
Personaggi della nostra storia



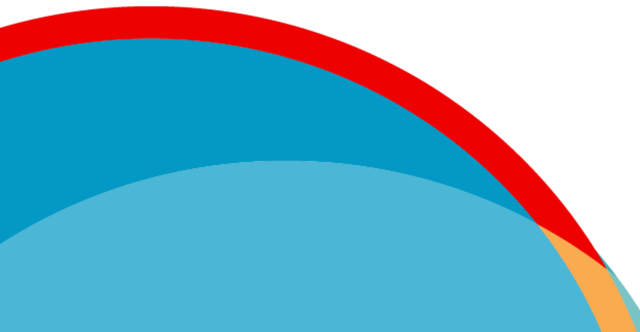
HR Manager



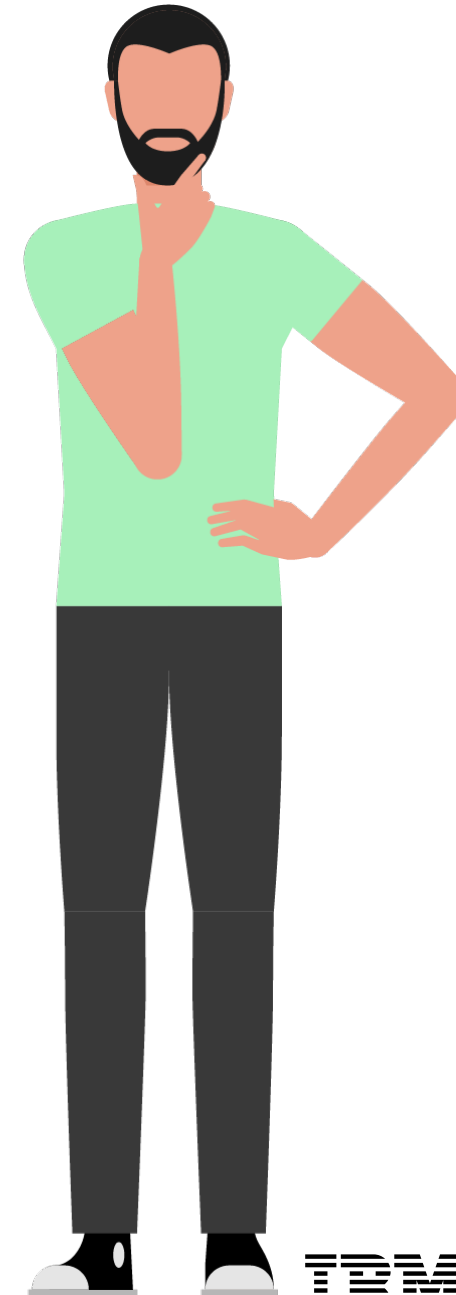
AI Engineer



**Hybrid Cloud
Engineer**



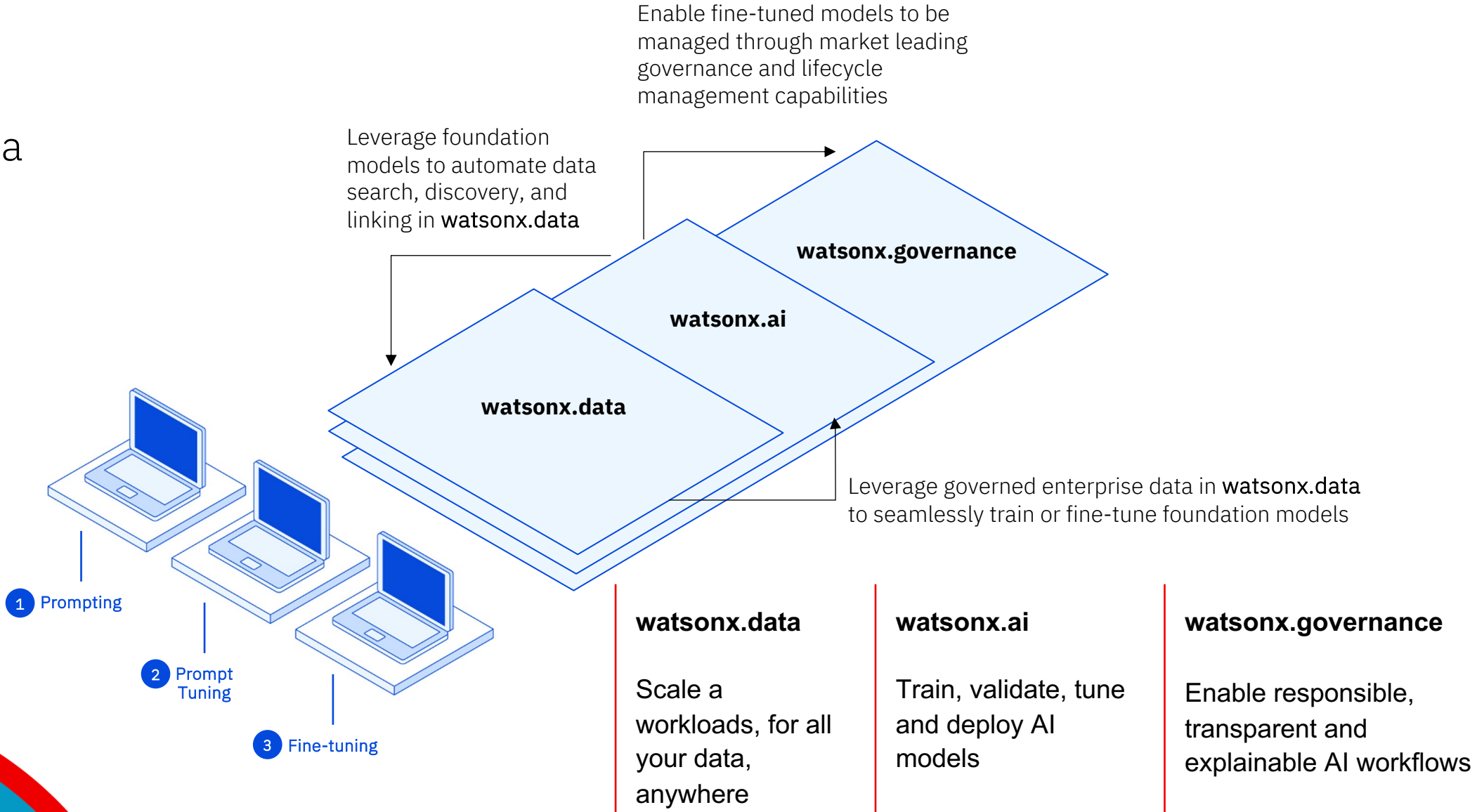
Mi servirebbe un tool
che ci aiuti nella
ottimizzazione del
processo di creazione
delle job description



watsonx

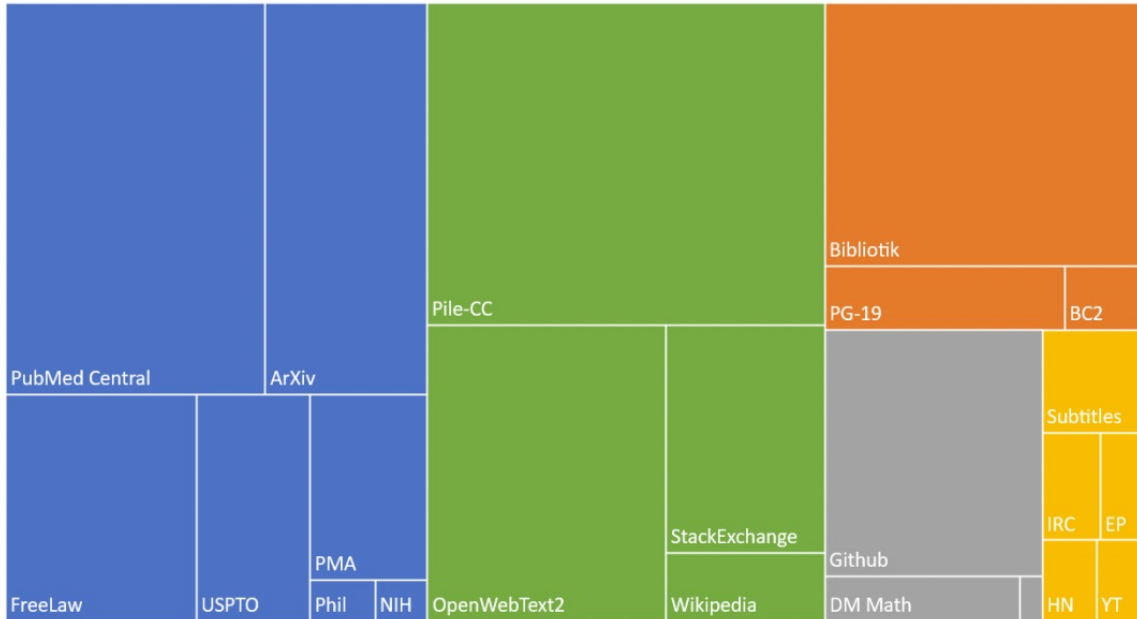
The platform
for AI and data

Scale and
accelerate the
impact of AI
with trusted
data.



Data – “IBM Data Pile”

A curated, production-ready enterprise-relevant dataset to power IBM foundation models



+

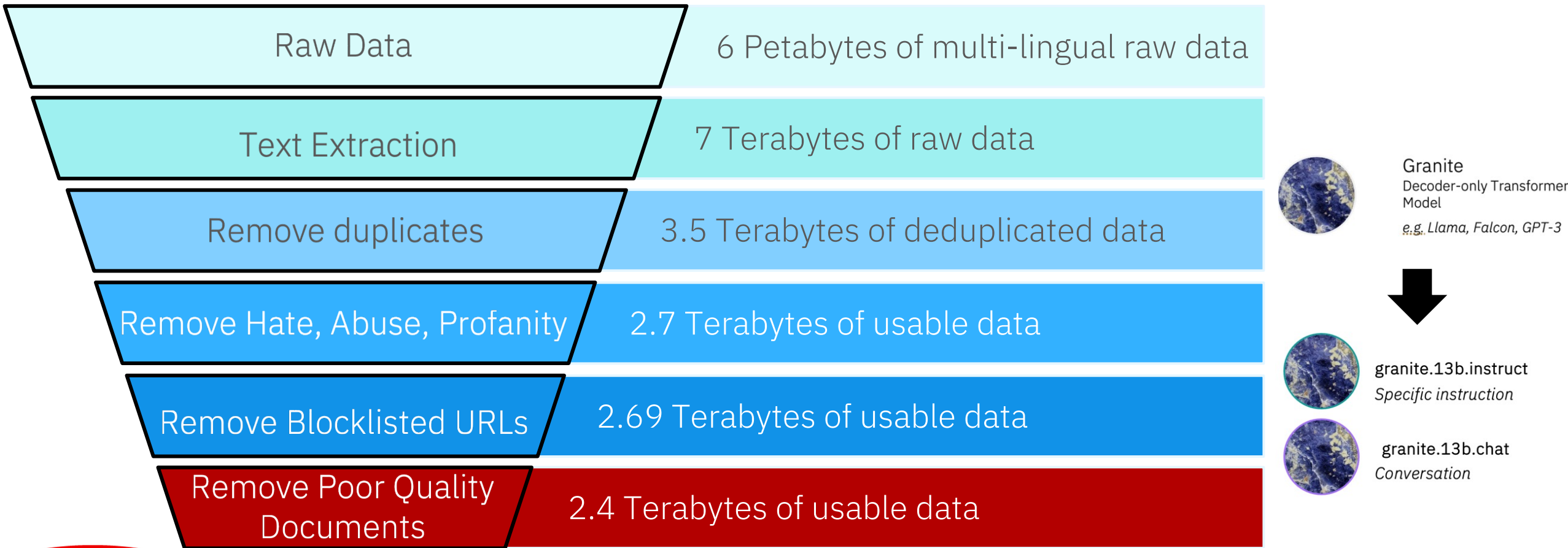
Legal
Financial
Regulatory
Sustainability
Cybersecurity
Code (e.g. Ansible)

Curated and filtered data (hate & profanity filtering, license terms etc.)

Among the largest language+code datasets ever assembled



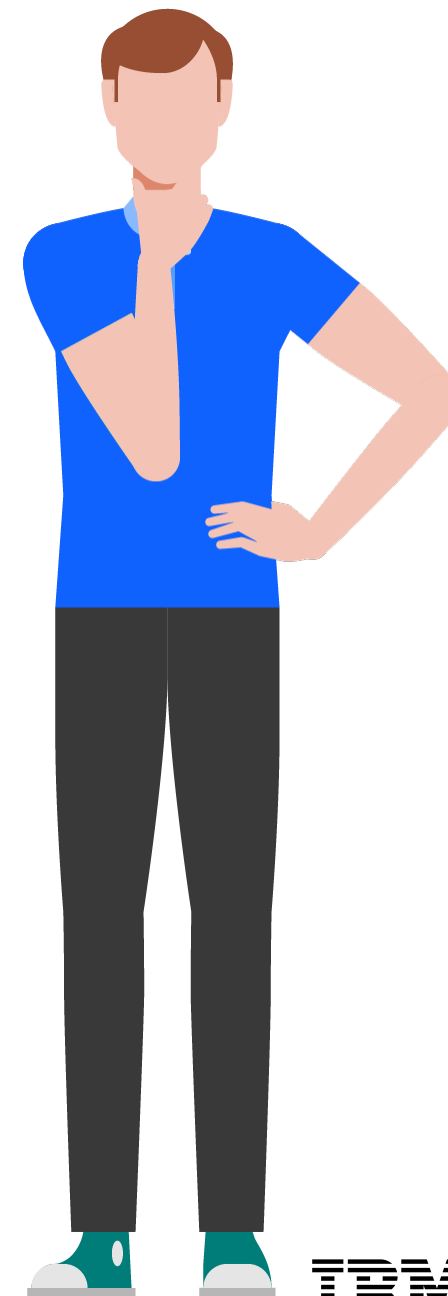
Aggressive Filtering of Objectionable and Noisy Content



Tokenized to 1.2 Trillion Tokens for Training

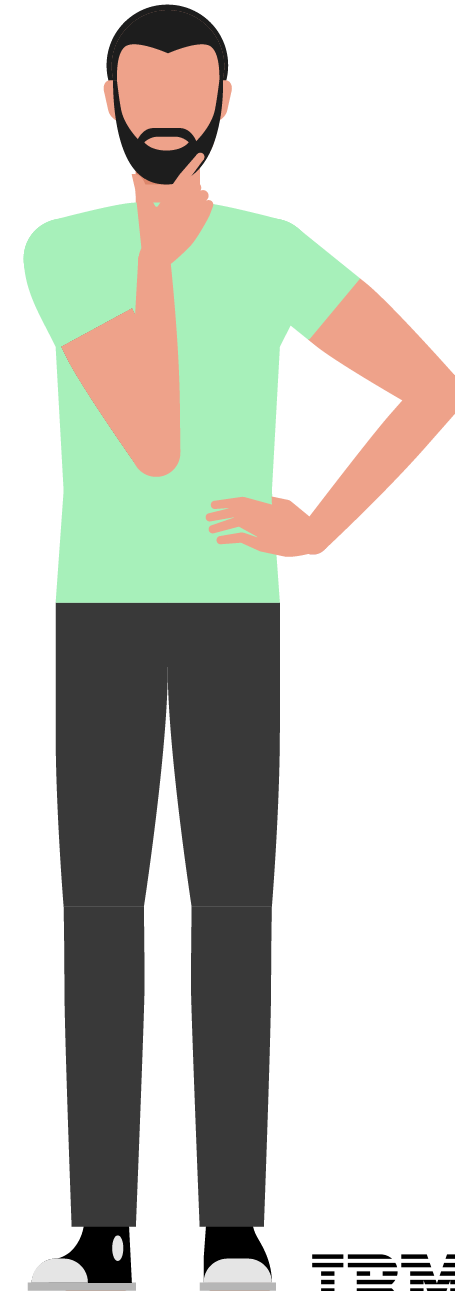
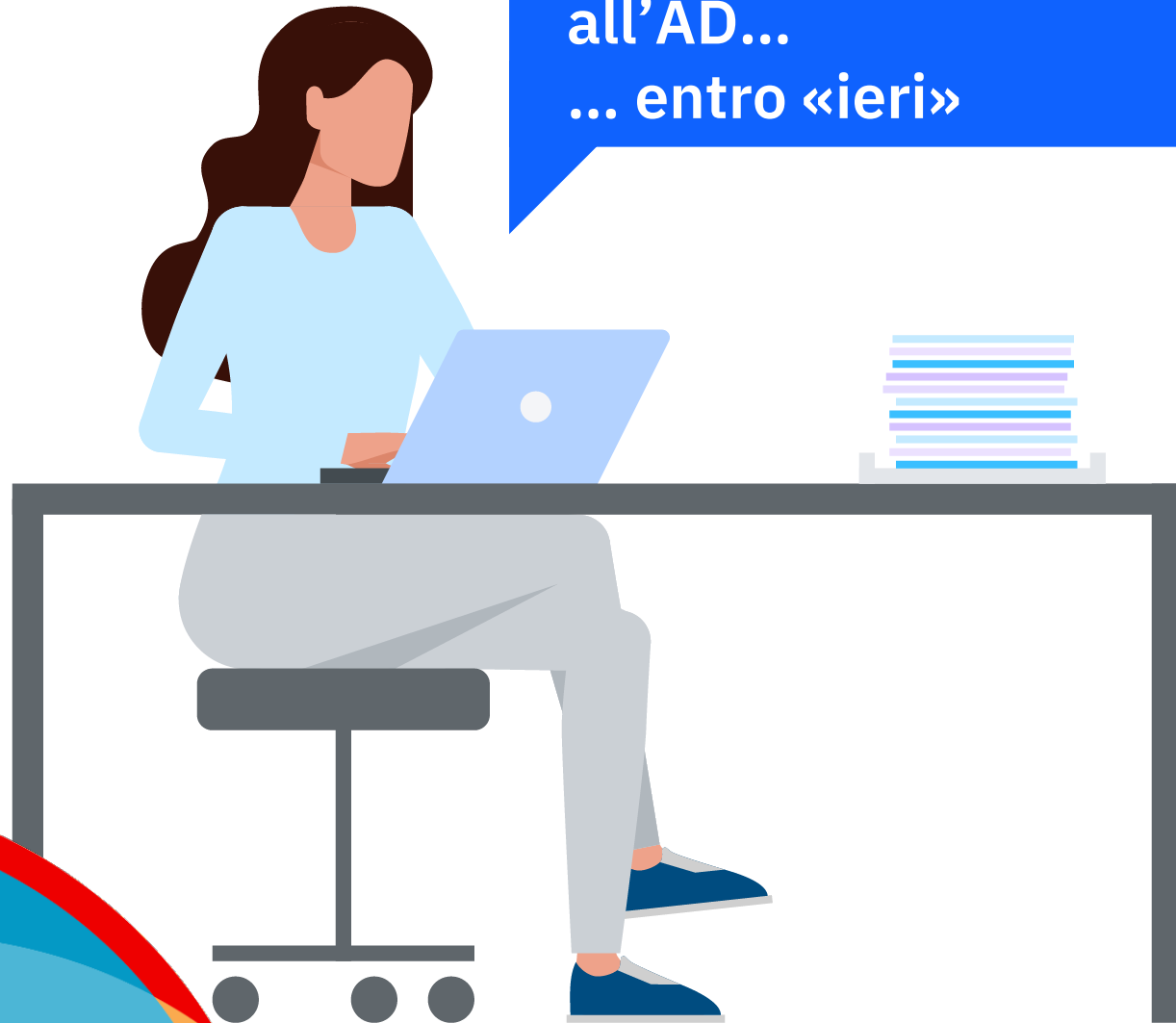


Utilizzare l'AI
generativa sembra
promettente, ma
quanto è complesso
partire?



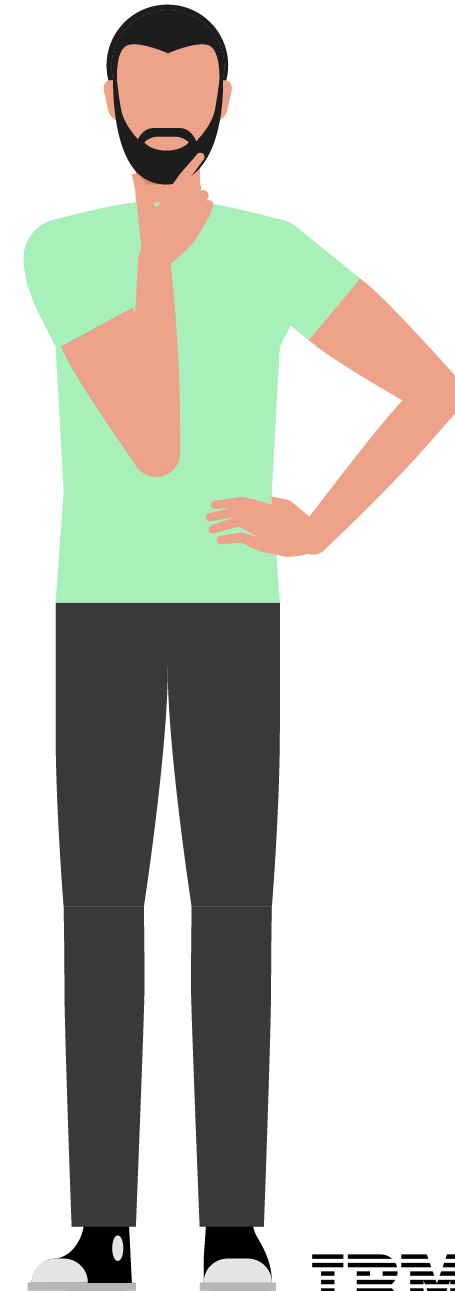
DEMO

Ok partiamo!
Servirebbe
presentare una demo
all'AD...
... entro «ieri»



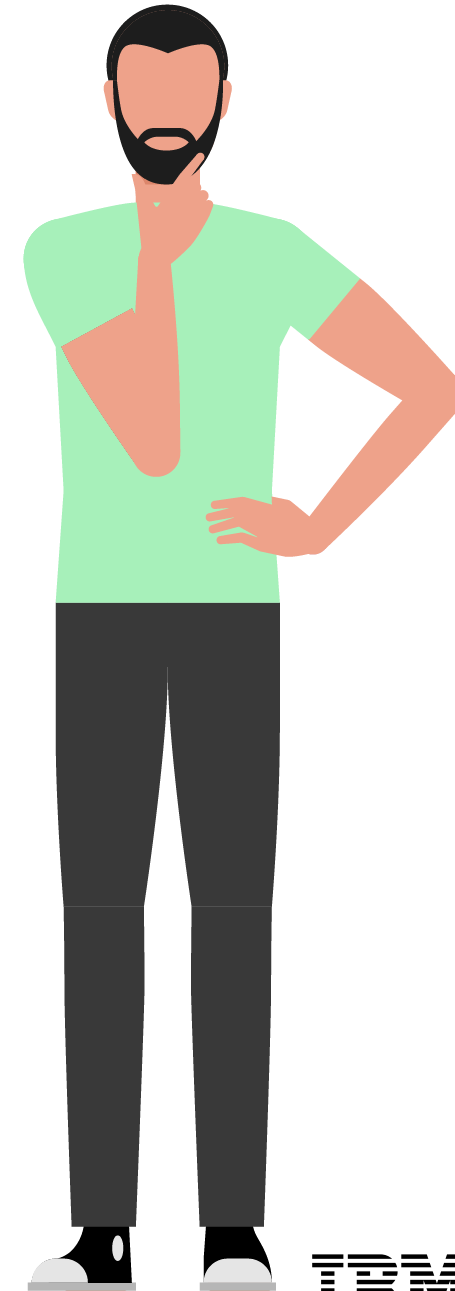
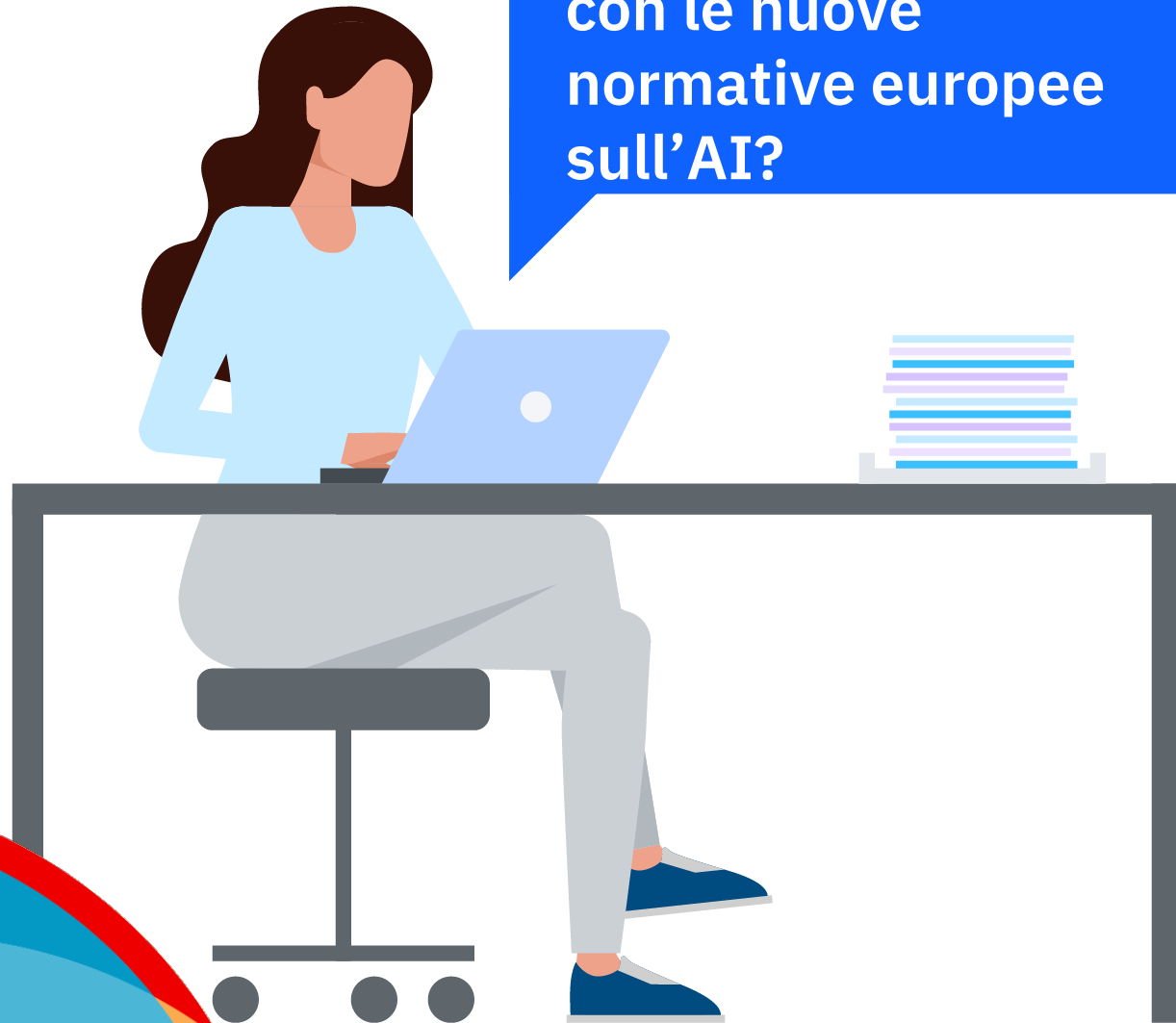
DEMO

Ottima Demo! Non è
che questa AI
generativa ci
potrebbe aiutare
anche nella selezione
dei candidati?



DEMO

Tutto bellissimo!
Il legal mi ha chiesto
come siamo messi
con le nuove
normative europee
sull'AI?



The promise of AI is clear, but implementations come with questions

IDC predicts AI lifecycle opportunity is 6.7B in 2022 with AI Governance opportunity growing at 55%

How do we operationalize AI with confidence?

“Protected/sensitive data like ethnicity and gender should not be used by AI models for hiring. How can we ensure fairness?”

How do I enable responsible use of AI to manage risk?

BIAS

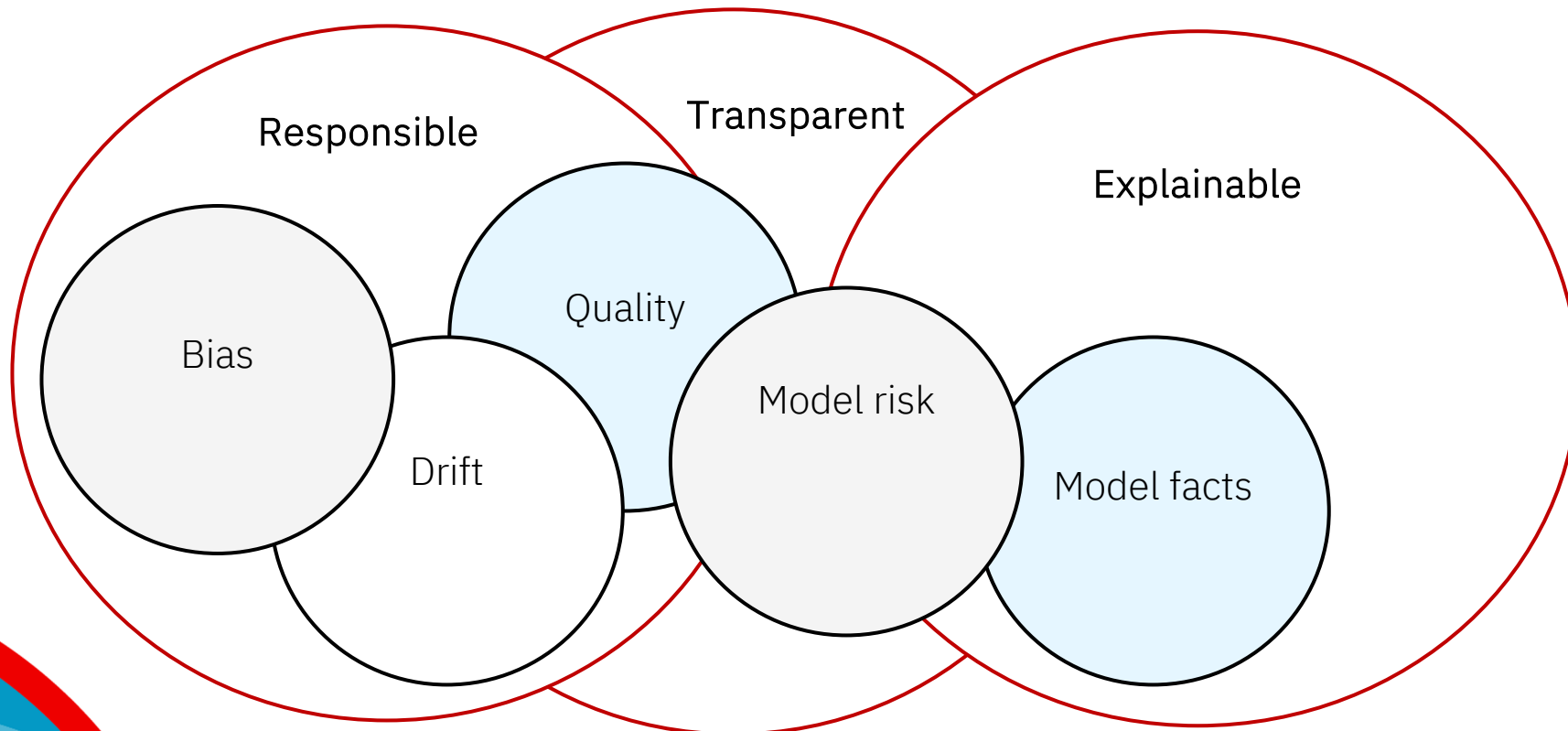
How do I protect and scale against regulations?



watsonx.governance

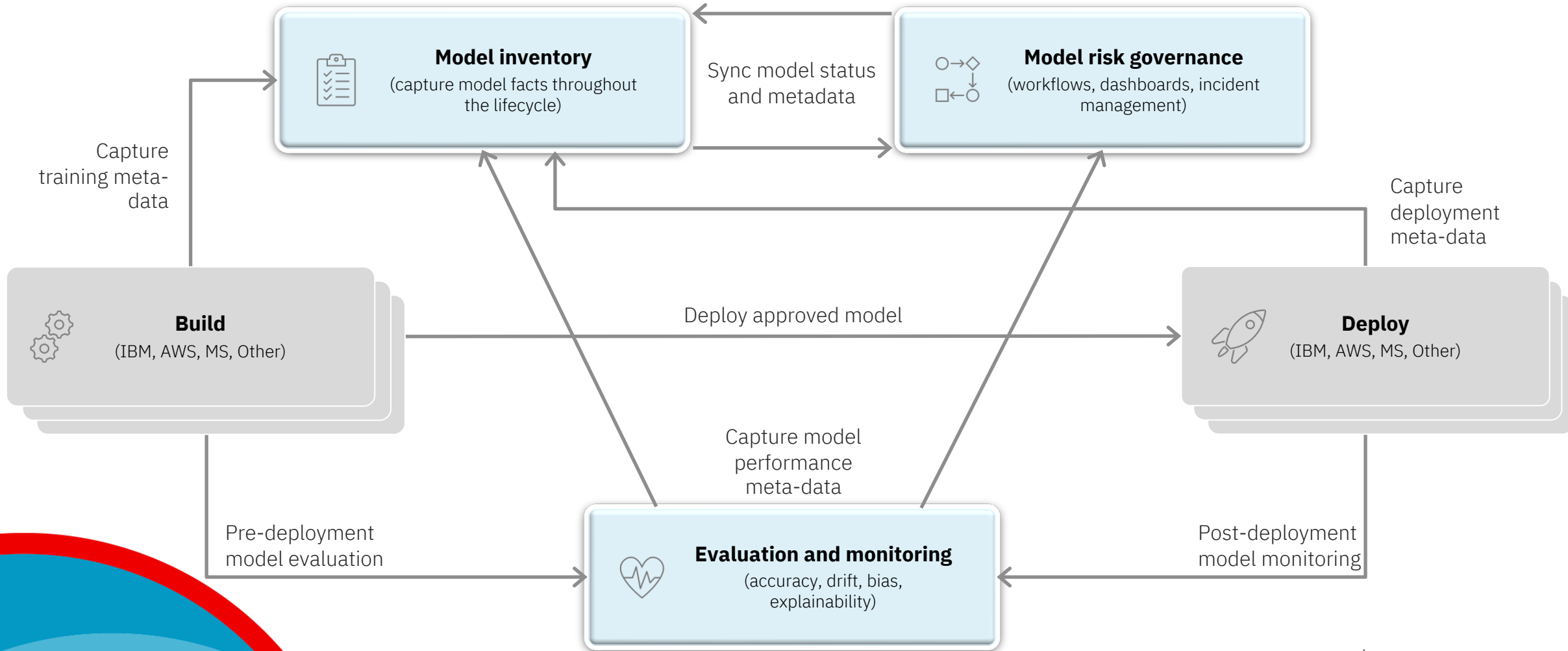
AI Governance

- Responsible (OWNERSHIP, BIAS)
- Transparent (QUALITY)
- Explainable (POLICY, ACTS)

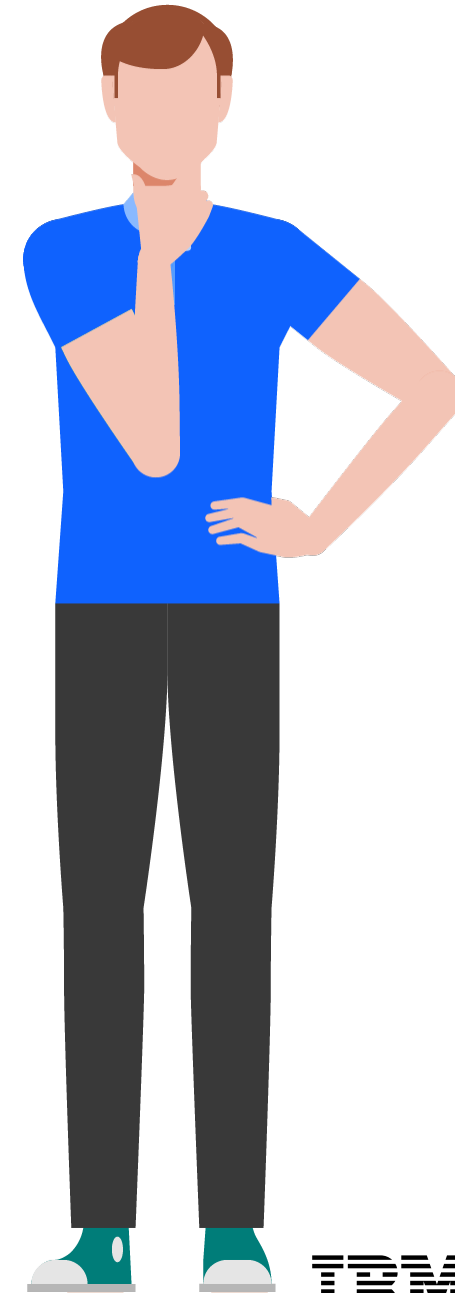


watsonx.governance

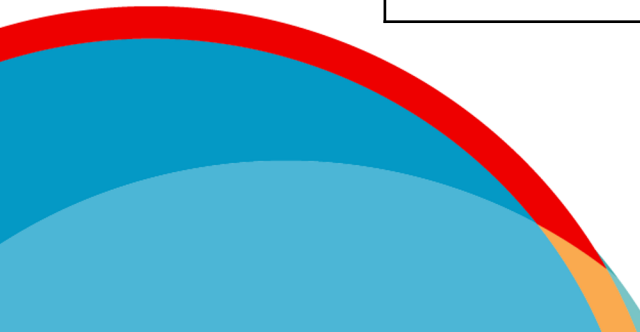
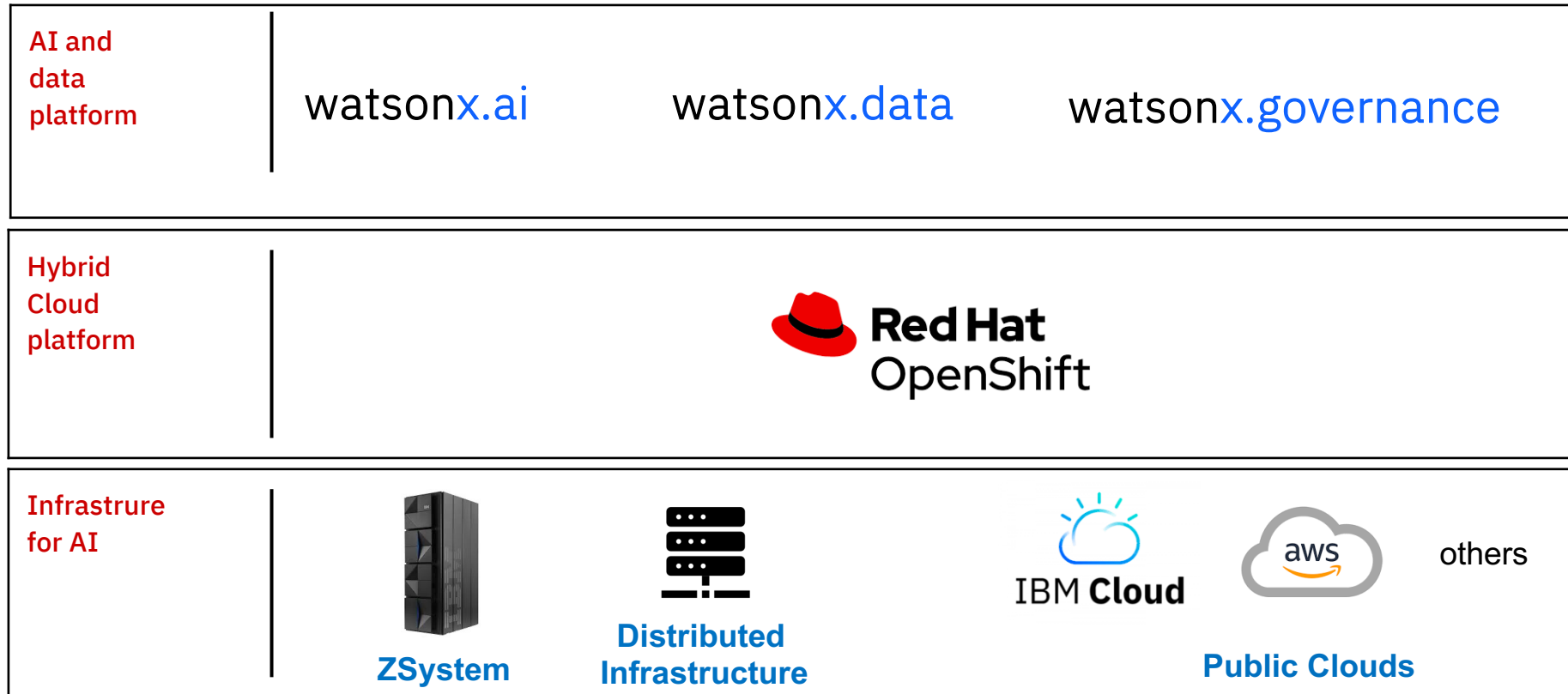
Govern across the AI lifecycle



Il nostro CTO chiede
«No lock-in» e
allineamento con la
nostra strategia
Hybrid Multicloud



Watsonx leverage the RedHat OpenShift Platform to implement Hybrid Multicloud architecture



Red Hat OpenShift on IBM Cloud (RHOIC)



A **managed cloud offering** providing an intuitive user experience with simplified cluster lifecycle management on **OpenShift** clusters.

Complete Platform

- Built-in monitoring and logging
- Keep Your Own Key, Bring Your Own Key
- Storage Options (file, block, COS volumes)
- Security Advisor
- Vulnerability Advisor

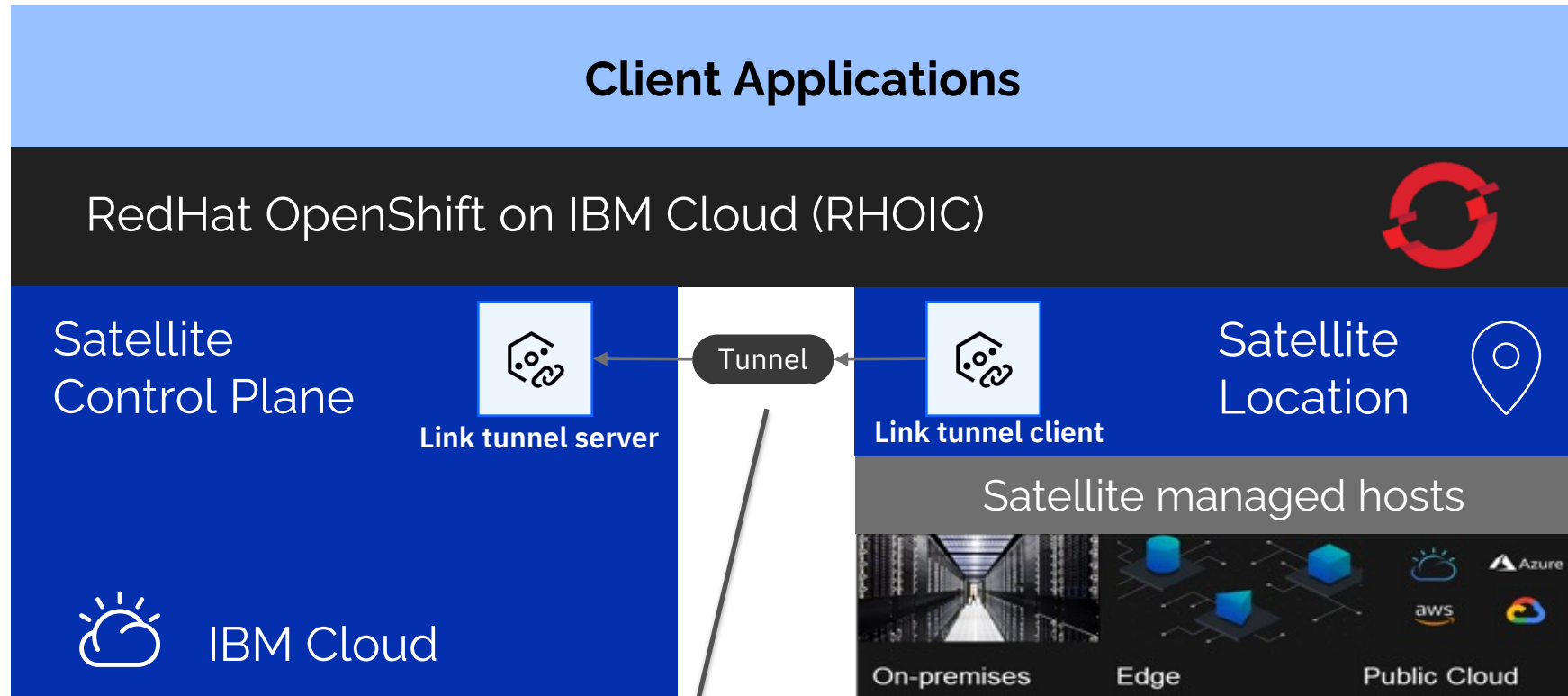
Resilient and Secure

- Automatic multizone deployments
- Highly available master nodes
- Security hardening
- Compliance
- Enterprise isolation options including dedicated compute, bare metal servers, and private clusters



DEMO

Hybrid Multicloud Managed OpenShift by IBM Cloud Satellite



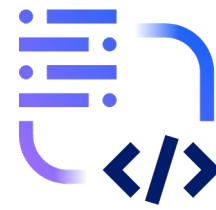
Simplified hybrid connectivity

RHEL/CoreOS Hosts



DEMO

IBM watsonx Code Assistant for Red Hat Ansible Lightspeed



- Write prompt in Ansible task description
- Press **ENTER** to generate AI content recommendations
- Press **TAB** to accept the suggestion
- Press **ESC** to reject the suggestion. Rejected suggestion analytics train the model.
- Modify suggestion analytics used to train the model.

```
≡ configure_postgres.yml ●
playbooks > ≡ configure_postgres.yml
1 ---
2 - name: Configure Database servers
3   hosts: databases
4   become: true
5
6   tasks:
7     # Install postgresql-server & Run postgresql-setup command & Start an
```


Riferimenti

Crea un account gratuito IBM Cloud - <https://cloud.ibm.com/registration>

Prova watsonx - https://eu-de.dataplatform.cloud.ibm.com/registration/stepone?context=wx&preselect_region=true

Watsonx - <https://www.ibm.com/watsonx>

RedHat OpenShift on IBM Cloud - <https://www.ibm.com/products/openshift>

IBM Cloud Satellite - <https://www.ibm.com/products/satellite>

Watsonx Code assistant - <https://www.ibm.com/products/watsonx-code-assistant>



Red Hat
Summit

Connect

Q&A?

IBM[®]

Red Hat
Summit

Connect

Grazie!

IBM[®]